

DG10000i

Inverters Range



⚡ POWER (PRP / ESP):
3000 r.p.m

📶 FREQUENCY
50Hz

V VOLTAGE
230V

⚖️ WEIGHT WITH WHEELS:
96kg

📏 DIMENSIONS WITH WHEELS:
L: 665 mm
W: 634 mm
H: 752 mm

Image for orientation purposes. Dagartech reserves the right to modify the data in this technical sheet without prior notice.



Unleaded gasoline



Air-cooled



Moving chassis



CE certified

1. Technical data

1.1. General technical data

Engine	DAGARTECH SC460 (459cc)
Frequency	50Hz
Voltage	230V
Work regime (rpm)	3000
Insulation class	H
Noise Level (1/4 load, 7 m)	63
Fuel tank capacity (l)	30
Type of start-up	Electric

1.2. Power (p.f. cos φ 1)

Nominal Power (kVA)	Starting Power (kW / kVA)
8,2 / 8,2	8,8 / 8,8

1.3. General technical data of the engine

Make and model	DAGARTECH SC460 (459cc)
r.p.m.	3000
Continuous power · 3,000 rpm (kW)	8200
Max. net power · 3600 rpm (kW)	8800
Fuel	Petrol
Fuel tank capacity (l)	30
Cylinder capacity (c.c.)	459
Cooling system	Air cooling
Oil type	N/A
Oil capacity (l)	1,2

1.4. General technical data of the alternator

Total Harmonic Distortion (THD)	< 3%
Insulation class	H

The equipment is supplied with a transport kit, included in the standard scope of delivery.

Consumption and autonomy

	Consumption (l/h)	Autonomy (h)
50%	2,5	12
100%	4,3	7

230V · 50Hz (3000 rpm)

DAGARTECH SC460 (459cc)

Why choose our inverters?



The transport kit is included in the standard scope of supply of the equipment.

- ✓ **PowerPulse Technology.**
Increasing your start-up capacity
- ✓ **Low fuel consumption.**
With load-dependent variable speed motors.
- ✓ **Lighter and more compact.**
Easy to transport, featuring wheels and a telescopic handle.
- ✓ **Silent operation.**
With noise levels below 65 dB.

And also...

You can extend its functionalities with the addition of a parallel Kit (see page 3).

i Please confirm the availability of the parallel option for this model.



DO YOU HAVE ANY QUESTIONS ABOUT THE PERFORMANCE OF THIS EQUIPMENT? DO YOU NEED ADVICE?

Get in touch with us.
We'll answer all your questions.

Write to us at
info@dagartech.com

Call us at:
+34 976 141 655



230V · 50Hz (3000 rpm)

DAGARTECH SC460 (459cc)

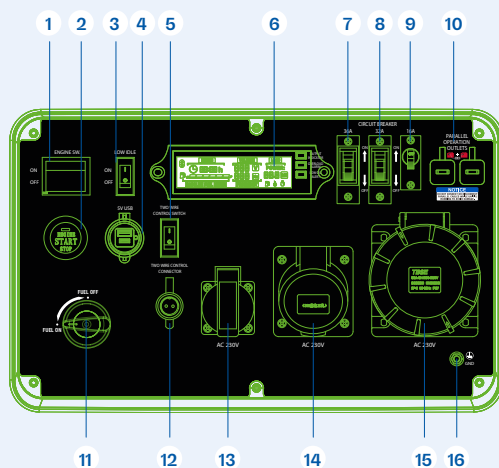
2. Standard Scope of Delivery

DETAILS OF THE SCOPE OF SUPPLY

- Supply without engine lubrication oil
- Engine oil protection
- Remote controller*
- Prepared for connection to A/M signal terminals



* On DG6000i and DG10000i models.



- | | |
|----------------------------|-------------------------------------|
| 1. Engine Switch | 9. 16A circuit breaker |
| 2. Start / Stop button | 10. Parallel kit connection outputs |
| 3. Low Idle | 11. Selector switch |
| 4. 5V USB socket | 12. A/M Signal connector |
| 5. A/M Signal selector | 13. Schuko socket 230V AC |
| 6. Data centre LED display | 14. 32A, 230V CA socket |
| 7. 36A circuit breaker | 15. Base de 63A, 230V CA |
| 8. 32A circuit breaker | 16. Grounding |

3. Available options

Parallel kit

Possible to operate two units in parallel for up to 6000W, as a convenient and efficient way of increasing the power output.

- i** Available for DG2300i, DG4000i and DG6000i models.



Do you need to add other features to this equipment? Can't find what you're looking for?
Contact us and tell us what you need.



DAGARTECH®
CUSTOM ENERGY SOLUTIONS

info@dagartech.com

T +34 976 141 655



**CUSTOM
ENERGY
SOLUTIONS**

dagartech.com