



ATyS d M 160A

Remotely operated motorised switch (RTS)

 **WEIGHT:**
15 kg

 **DIMENSIONS:**
L: 400 mm
W: 200 mm
H: 600 mm

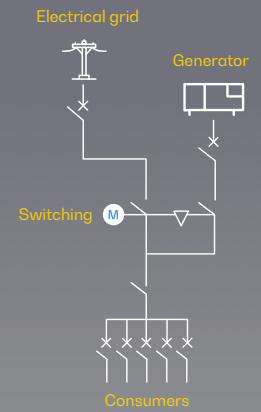
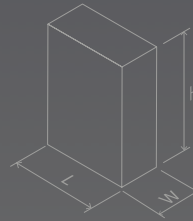





 CE certified

Image for orientation purposes. Dagartech reserves the right to modify the data in this technical sheet without prior notice.


 Supply voltage
 208-277VAC±20%

 Plug&play
 Solution

 Emergency manual
 start

 Watchdog
 relay

 IEC 60947-6-1 AC
 33B (up to 1250A)

1. General technical data

General technical data	Rated voltage	230VAC
	Voltage supply range	177-288VAC
	Frequency	50Hz / 60Hz
	Number of poles	4
	IP protection degree	54
	Cutting and isolating devices	Mechanically interlocked
	Cutting sectioning	Total Apparent
	Operating mode	Automatic / manual operation mode with interlocking
	Blocking	Lock - padlock
	Cable connection	Low/low
	Fastening system	Wall fixation, legs supplied
	Frame colour	RAL 7035

- ATyS d M devices are **4-pole transfer switches that are remotely controlled by de-energised contacts** from an external by means of volt-free contacts from an external controller.
- These are **modular products with fully apparent cutoff indication** and are designed to be used in load feed systems during transfer.

Environmental conditions	Humidity (non-condensing)	55 °C	80%	
		40 °C	95%	
	Temperature	No de-rating	-20°C +40°C	
		With de-rating	40°C < t ≤ +70°C	
	Altitude	No de-rating	Max 2000m	
			2000 m<A≤3000	3000m<A≤4000
	Correction factors	EU	0,95	0,8
		IE	0,85	0,85

Directives and Regulations

At a minimum, the ATyS d M models comply with the following international standards

- IEC 60947-6-1
- GB 14048-11
- EN 60947-6-1
- VDE 0660-107
- BS EN 60947-6-1
- NBN EN 60947-6-1
- IEC 60947-3
- IS 13947-3
- EN 60947-3
- NBN EN 60947-3
- BS EN 60947-3

2. Electrical specifications

Amperage		160A
Frequencies		50Hz / 60Hz
Thermal intensity (Ith) at 40°C (A)		160
Thermal intensity (Ith) at 50°C (A)		125
Thermal intensity (Ith) at 60°C (A)		125
Thermal intensity (Ith) at 70°C (A)		100
Rated insulation voltage Ui (V) (Power circuit)		800
Rated impulse voltage Uimp (V) (Power circuit)		8
Rated insulation voltage Ui (V) (Control circuit)		300
Rated impulse voltage Uimp (V) (Control circuit)		4
Rated operating current, Ie (A) IEC 60947-3 at 415VAC - 40°C	AC 21A / 21B ¹	160/160
	AC 22A / 22B ¹	125/160
	AC 23A / 23B ¹	125/160
Rated operating current, Ie (A) IEC 60947-6-1 at 415VAC - 40°C	AC 33A / 32B	125**/160
Short-circuit fuse protection (use of DIN gG fuses)	Expected short-circuit current (kA eff)	40
	Associated fuse rating (DIN gG)	160
Short-circuit capability	Rated short-time withstand current 1s ICW (kA)	4
	Rated short-time withstand current 30 ms ICW (kA)	10
	Rated short-time withstand current 60 ms ICW (kA)	N/A
	Rated short-time withstand current 1ms ICW (kA)	7
Reaction time (excluding loss of supply detection time and excluding any applicable delay timer)	I-II or II-I/I-O OR O O-II (s)	0,75/0,45
	Duration of the "blackout" in Un(s)	0,3
Consumption	Network current (A)	20
	Steady state consumption (VA)	6
Mechanical characteristics	Number of manoeuvres	10000
Conductor cross-section (not compatible with aluminium cables)	Minimum cross-section (Cu mm ²), rigid and flexible	10
	Maximum cross-section (Cu mm ²), rigid and flexible	70
Minimum / maximum power supply (VAC)		166/332
Nominal power consumption electric control (start/nominal) (VA)		206/114

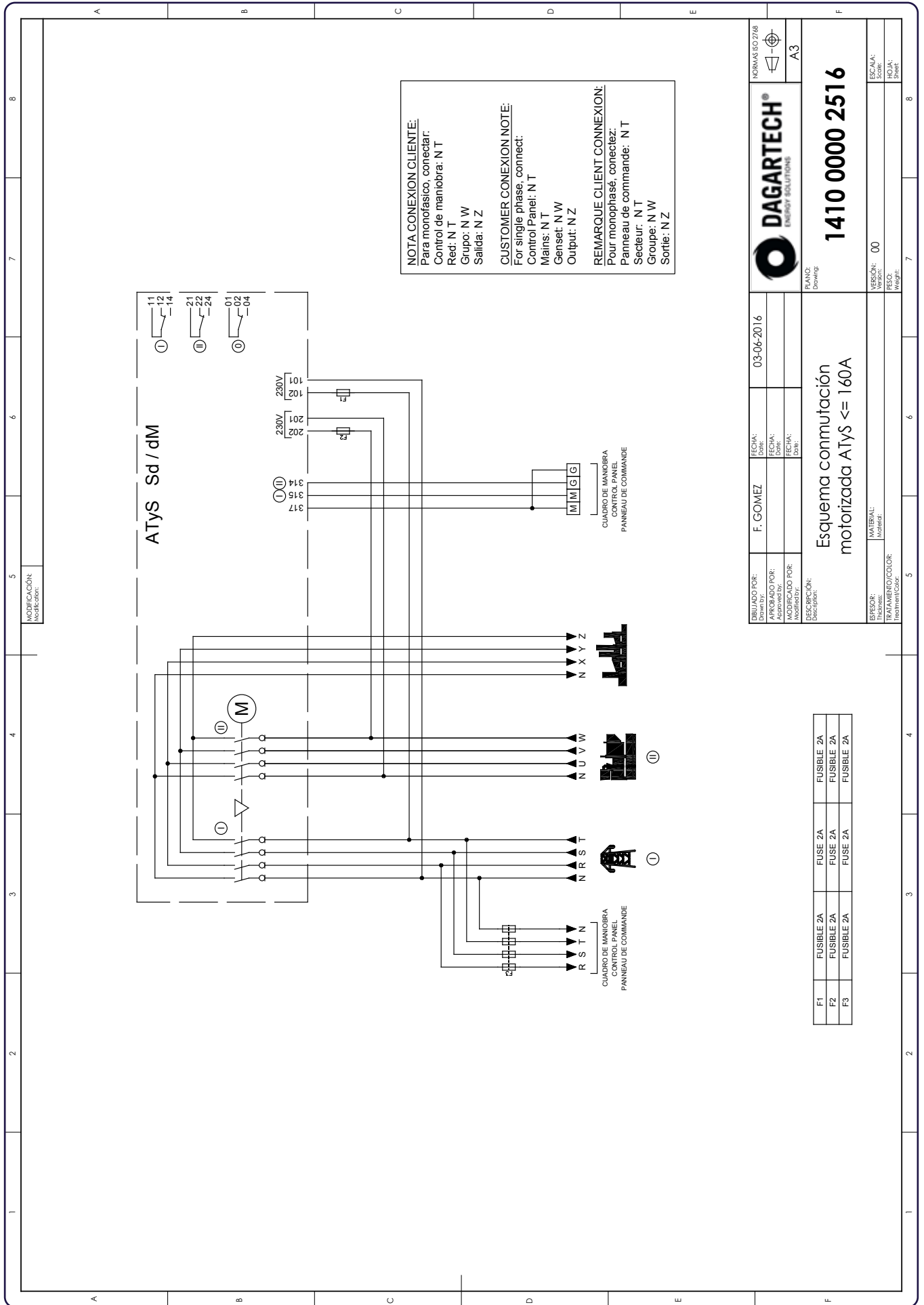
¹Posibilidad de alcanzar 125A con una sección del conductor mayor y el uso de un puente de conexión de 160A.

** AC 33B 160A, según GB 14048.111 Category of use with **indication A**: Frequent manoeuvres / Category of use with **indication B**: non-frequent manoeuvres.

V.0-2024. Last update: 19/04/2024. Indicative technical plan and indicative images. Dagartech reserves the right to modify the data in this technical sheet without prior notice.



GROUPE/ARTICLE		Item group		Type DESIGNATION		Reference		BUT	
MATIERE		Raw material		MATERIALS		MATERIALS		Type	
SURF		SURF		160A		160A		Type	
VOLU		VOLU		DESIGNATION COMPLÉMENTAIRE		COMPLÉMENTARY DESIGNATION		Type	
MASS		MASS		EQUIVALE		EQUIVALE		Type	
TRAITEMENT		Process		ATyS dM		ATyS dM		Type	
CODE		Reference		4X160A		4X160A		Type	
CODE SELECTION		OUTIL		Tool		Tool		Type	
AFFAIRE		AFFAIRE		A3		A3		Type	
<small> THIS DRAWING IS UNCLASSIFIED IT IS NOT TO BE USED FOR THE DESIGN OF ELECTRICAL EQUIPMENT OR FOR THE DESIGN OF ELECTRICAL INSTALLATIONS THIS DRAWING IS UNCLASSIFIED IT IS NOT TO BE USED FOR THE DESIGN OF ELECTRICAL EQUIPMENT OR FOR THE DESIGN OF ELECTRICAL INSTALLATIONS </small>		<small> THIS DRAWING IS UNCLASSIFIED IT IS NOT TO BE USED FOR THE DESIGN OF ELECTRICAL EQUIPMENT OR FOR THE DESIGN OF ELECTRICAL INSTALLATIONS </small>		<small> THIS DRAWING IS UNCLASSIFIED IT IS NOT TO BE USED FOR THE DESIGN OF ELECTRICAL EQUIPMENT OR FOR THE DESIGN OF ELECTRICAL INSTALLATIONS </small>		<small> THIS DRAWING IS UNCLASSIFIED IT IS NOT TO BE USED FOR THE DESIGN OF ELECTRICAL EQUIPMENT OR FOR THE DESIGN OF ELECTRICAL INSTALLATIONS </small>		<small> THIS DRAWING IS UNCLASSIFIED IT IS NOT TO BE USED FOR THE DESIGN OF ELECTRICAL EQUIPMENT OR FOR THE DESIGN OF ELECTRICAL INSTALLATIONS </small>	



NOTA CONEXION CLIENTE:
 Para monofasico, conectar:
 Control de maniobra: N T
 Red: N T
 Grupo: N W
 Salida: N Z

CUSTOMER CONEXION NOTE:
 For single phase, connect:
 Control Panel: N T
 Mains: N T
 Genset: N W
 Output: N Z

REMARQUE CLIENT CONNEXION:
 Pour monophasé, connecter:
 Panneau de commande: N T
 Secteur: N T
 Groupe: N W
 Sortie: N Z

DESIGNADO POR: Approved by:	FECHA: Date:	F. GOMEZ	03-06-2016	NORMAS ISO 7768
APROBADO POR: Approved by:	FECHA: Date:			A3
MODIFICADO POR: Modified by:	FECHA: Date:			
DESCRIPCION: Description:	Esquema conmutación motorizada ATyS <= 160A			
TRATAMIENTO/COLOR: Treatment/Color:	MATERIAL: Material: 00			
VERSION: Version:	ES/A/A: Esc./A/A: Sheet:			
PESO: Weight:	HOJA: Sheet:			

F1	FUSIBLE 2A	FUSIBLE 2A
F2	FUSIBLE 2A	FUSIBLE 2A
F3	FUSIBLE 2A	FUSIBLE 2A



DAGARTECH[®]
CUSTOM ENERGY SOLUTIONS

info@dagartech.com

T +34 976 141 655

**CUSTOM
ENERGY
SOLUTIONS**

dagartech.com