



ATyS d 315A

Remotely operated motorised switch (RTS)

 **WEIGHT:**
40 kg

 **DIMENSIONS:**
L: 648 mm
W: 337 mm
H: 511 mm

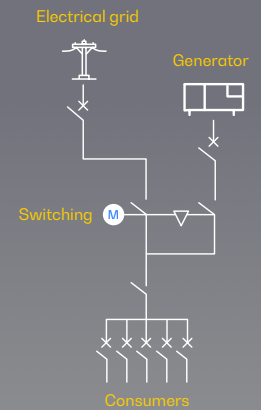
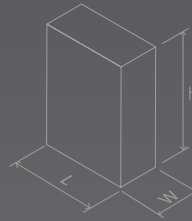






 CE certified


Image for orientation purposes. Dagartech reserves the right to modify the data in this technical sheet without prior notice.


 Supply voltage
 208-277VAC±20%

 Plug&play
 Solution

 Emergency manual
 start

 Watchdog
 relay

 IEC 60947-6-1 AC
 33B (up to 1250A)

1. General technical data

General technical data	Rated voltage	230VAC
	Voltage supply range	177-288VAC
	Frequency	50Hz / 60Hz
	Number of poles	4
	IP protection degree	43
	Cutting and isolating devices	Mechanically interlocked
	Cutting sectioning	Total Apparent
	Operating mode	Automatic / manual operation mode with interlocking
	Blocking	Lock - padlock
	Cable connection	Low/low
	Fastening system	Wall fixation, legs supplied
	Frame colour	RAL 7035

- ATyS d devices are **4-pole remotely operated motorised transfer switches** with fully apparent cutoff.
- They allow the **on-load transfer of two three-phase power supplies via de-energised remote contacts**, from an external automatic controller, using pulse logic or a switch.
- They are **designed for use in low voltage systems** where an interruption of power to the load during transfer is acceptable.

Environmental conditions	Humidity (non-condensing)	55 °C	80%	
		40 °C	95%	
	Temperature	No de-rating	-20°C +40°C	
		With de-rating	-20°C < t ≤ +70°C	
	Altitude	No de-rating	Max 2000m	
			2000 m<A≤3000	3000m<A≤4000
	Correction factors	EU	0,95	0,8
IE		0,85	0,85	

Directives and Regulations

At a minimum, the ATyS d M models comply with the following international standards

- IEC 60947-6-1
- GB 14048-11
- EN 60947-6-1
- VDE 0660-107
- BS EN 60947-6-1
- NBN EN 60947-6-1
- IEC 60947-3
- IS 13947-3
- EN 60947-3
- NBN EN 60947-3
- BS EN 60947-3

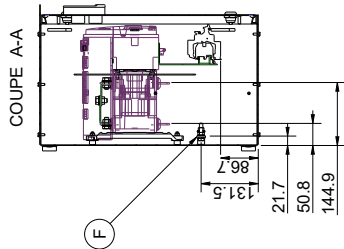
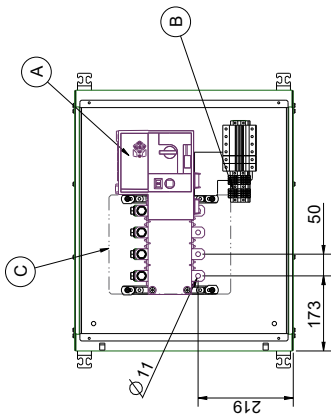
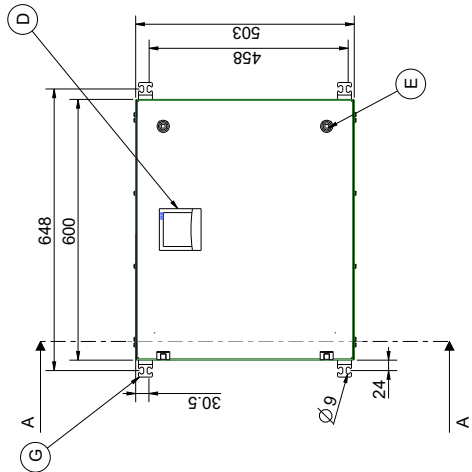
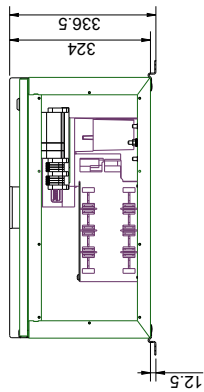
2. Electrical specifications

Amperage		315A
Frequencies		50Hz / 60Hz
Thermal intensity (Ith) at 40°C (A)		315
Thermal intensity (Ith) at 50°C (A)		N/A
Thermal intensity (Ith) at 60°C (A)		N/A
Thermal intensity (Ith) at 70°C (A)		N/A
Rated insulation voltage Ui (V) (Power circuit)		1000
Rated impulse voltage Uimp (V) (Power circuit)		12
Rated insulation voltage Ui (V) (Control circuit)		300
Rated impulse voltage Uimp (V) (Control circuit)		4
Rated operating current, Ie (A) IEC 60947-3 at 415VAC - 40°C	AC 21A / 21B ¹	315/315
	AC 22A / 22B ¹	315/315
	AC 23A / 23B ¹	315/315
Rated operating current, Ie (A) IEC 60947-6-1 at 415VAC - 40°C	AC 33A / 32B	N/A
Short-circuit fuse protection (use of DIN gG fuses)	Expected short-circuit current (kA eff)	50
	Associated fuse rating (DIN gG)	315
Short-circuit capability	Rated short-time withstand current 1s ICW (kA)	N/A
	Rated short-time withstand current 30 ms ICW (kA)	N/A
	Rated short-time withstand current 60 ms ICW (kA)	10
	Rated short-time withstand current 1ms ICW (kA)	8
Reaction time (excluding loss of supply detection time and excluding any applicable delay timer)	I-II or II-I/I-O OR O O-II (s)	1,3/0,85
	Duration of the "blackout" in Un(s)	0,6
Consumption	Network current (A)	N/A
	Steady state consumption (VA)	N/A
Mechanical characteristics	Number of manoeuvres	8000
Conductor cross-section (not compatible with aluminium cables)	Minimum cross-section (Cu mm ²), rigid and flexible	N/A
	Maximum cross-section (Cu mm ²), rigid and flexible	N/A
Minimum / maximum power supply (VAC)		166/332
Nominal power consumption electric control (start/nominal) (VA)		298/137

¹Category of use with **indication A**: Frequent manoeuvres / Category of use with **indication B**: non-frequent manoeuvres.

V.0 - 2024. Last update: 19/04/2024. Indicative technical plan and indicative images. Dagartech reserves the right to modify the data in this technical sheet without prior notice.

-Control terminal kit
 Ref : 70A824
 -Schéma n° 3S365456
 au dernier indice
 -Mettre un plan de
 câblage dans le coffret
 -Monter la visserie de
 raccordement amont et
 aval de l'ATyS

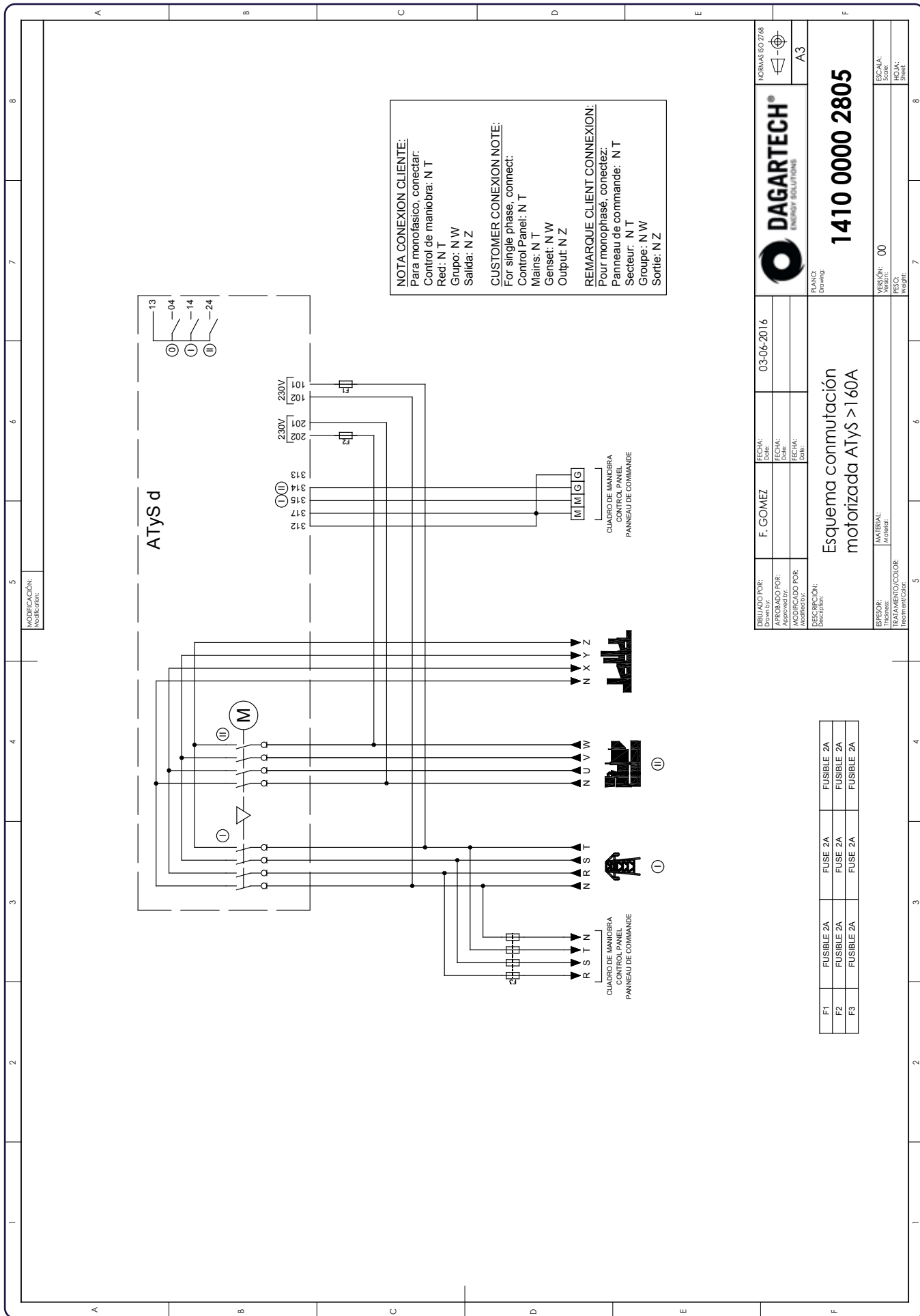


Landmark	Designation
A	Transfer switch ATyS D 4x315A
B	Control terminals
C	Upstream and downstream screen protection
D	D10 delivered loose
E	3mm double bar locking
F	Earthing bar
G	Fixing brackets delivered loose

NOTE: THE HANDLE IS DELIVERED IN THE ENCLOSURE

GROUP/ARTICLE	Item group	Item description	Quantity	Unit
MATIERE	Raw material	MATERIALS	Quantity	Unit
SHRUF	Accessories	315A	Quantity	Unit
MASS	Designation	COMPLEMENTARY DESIGNATION		
TRATTAMENTO	Process	ENCLOSED TRANSFER SWITCH		
CODE	Reference	4X315A		
CODE SELECTION	Tool			
AFFAIRE				
THIS DRAWING IS VALID FOR THE PRODUCT AS SHOWN IN THE PHOTOGRAPHY IT IS NOT VALID FOR OTHER VERSIONS OF THE PRODUCT THIS DRAWING IS NOT VALID FOR OTHER VERSIONS OF THE PRODUCT				
ESCHELLE Scale: 1:1			A3	

Indicative technical plan and indicative images. Dagartech reserves the right to modify the data in this technical sheet without prior notice.



NOTA CONEXION CLIENTE:
 Para monofásico, conectar:
 Control de maniobra: N T
 Red: N T
 Grupo: N W
 Salida: N Z

CUSTOMER CONEXION NOTE:
 For single phase, connect:
 Control Panel: N T
 Mains: N T
 Genset: N W
 Output: N Z

REMARQUE CLIENT CONNEXION:
 Pour monophasé, connectez:
 Panneau de commande: N T
 Secteur: N T
 Groupe: N W
 Sortie: N Z

		NORMAS ISO 9001 	
DISEÑADO POR: APROBADO POR: MODIFICADO POR:	FECHA: FECHA: FECHA:	03-06-2016	
DESCRIPCIÓN: Descripción:		Esquema conmutación motorizada ATyS > 160A	
MATERIAL: Material:		00	
TRATAMIENTO/COLOR: Treatment/Color:		00	
VERSION: Escala:		ESCALA: Sheet:	
PESO: Weight:		HOJA: Sheet:	

F1	FUSIBLE 2A	FUSE 2A	FUSIBLE 2A
F2	FUSIBLE 2A	FUSE 2A	FUSIBLE 2A
F3	FUSIBLE 2A	FUSE 2A	FUSIBLE 2A



DAGARTECH[®]

CUSTOM ENERGY SOLUTIONS

info@dagartech.com

T +34 976 141 655

**CUSTOM
ENERGY
SOLUTIONS**

dagartech.com