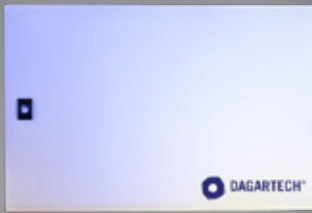


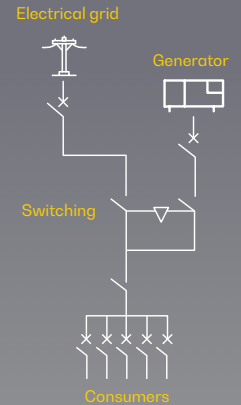
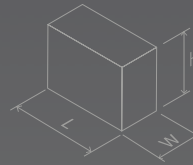
# ATS 25 A

Switchboard  
for contactors



WEIGHT:  
**7 kg**

DIMENSIONS:  
**L: 400 mm**  
**W: 200 mm**  
**H: 300 mm**



CE certified

Image for orientation purposes. Dagartech reserves the right to modify the data in this technical sheet without prior notice.



## 1. General technical data

<b>General technical data</b>	<b>Contactor application</b>	Resistive load
	<b>Employment category</b>	AC-1
	<b>Frequency</b>	50/60Hz
	<b>Number of poles</b>	4
	<b>Composition of auxiliary contacts</b>	1 NA + 1 NC
<b>Rated operating voltage (U<sub>o</sub>)</b>	Supply voltage, state 1 <=690 V CA 25... 400 Hz	
	Supply circuit, state 1 <=300 V DC	
<b>Nominal corr. of employment (I<sub>o</sub>)</b>	25 A 60°C at <= 440 V AC-1 for power supply circuit	
	<b>Type of control circuit</b>	AC at 50/60 Hz
	<b>Control circuit voltage (U<sub>c</sub>)</b>	230V AC 50/60Hz
	<b>Peak voltage withstand (U<sub>imp</sub>)</b>	6 kV according to IEC 60947
	<b>Overvoltage category</b>	III
<b>Conventional thermal current at &lt;60°C (I<sub>th</sub>)</b>	10 A at <60°C for signalling circuit	
	25 A at <60°C for supply circuit	
<b>Irms rated connection power</b>	140 A AC for signalling circuit according to IEC 60947-5-1	
	250 A DC for signalling circuit according to IEC 60947-5-1	
	250 A at 440 V for supply circuit according to IEC 60947	
<b>Assigned shearing power</b>	250 A at 440 V for supply circuit according to IEC 60947	
	30 A at <40°C - 10 min for supply circuit	
	61 A at <40°C - 1 min for supply circuit	
	105 A at <40°C - 10 s for supply circuit	
<b>Allowable time current (I<sub>cw</sub>)</b>	210 A at <40°C - 1 s for supply circuit	
	100 A - 1 s for signalling circuit	
	120 A - 500 ms for signalling circuit	
	140 A - 100 ms for signalling circuit	

### Standards

- CSA C22.2 No 14
- EN 60947-4-1
- EN 60947-5-1
- IEC 60947-4-1
- IEC 60947-5-1
- UL 508

### Product certifications

- UL
- BV
- CCC
- LROS (Lloyds Register of Shipping)
- DNV
- CSA
- RINA
- GOST
- GL

50/60 Hz

Remotely operated motorised switch (RTS)

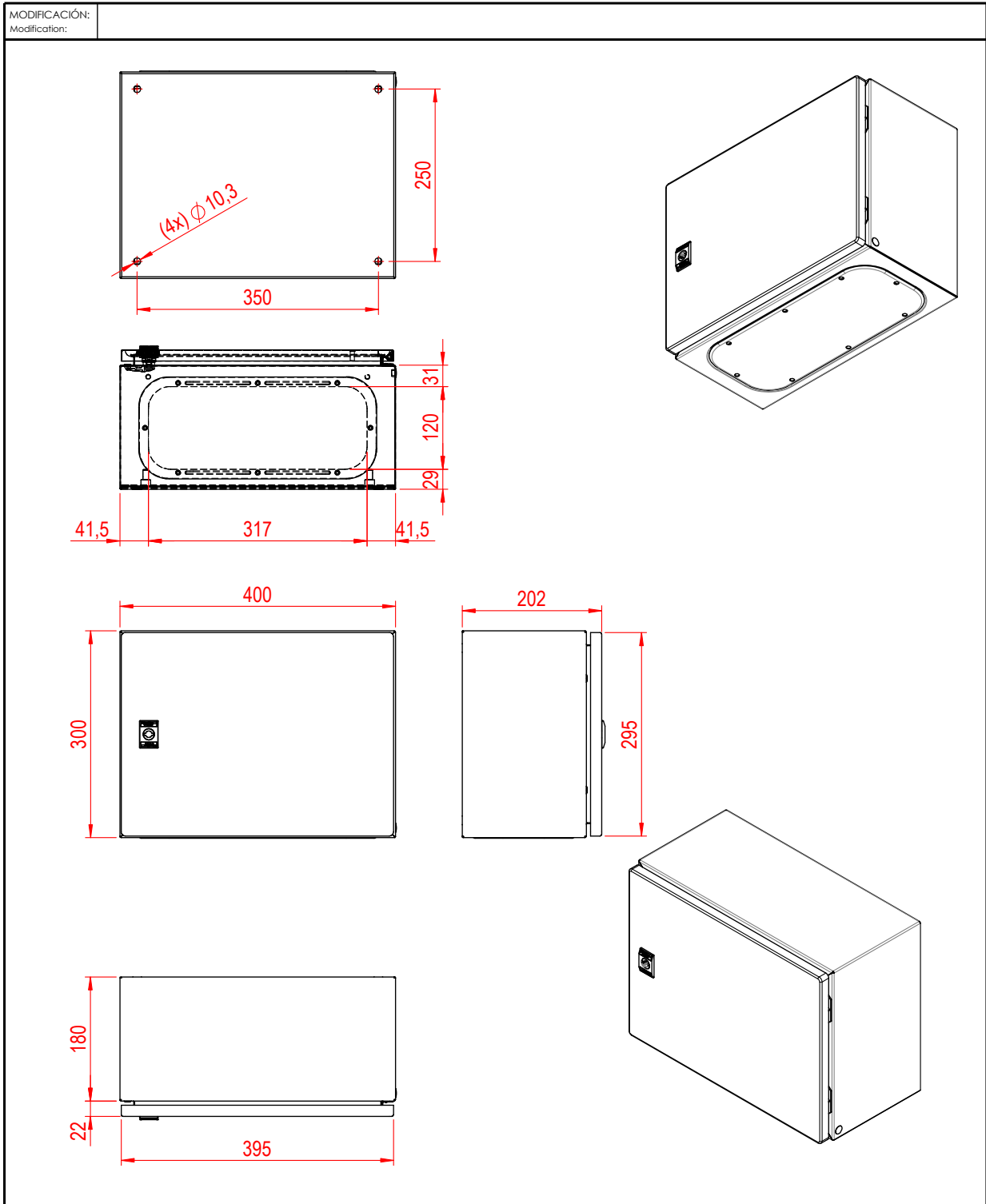
## 2. Electrical specifications

Electrical specifications / Amperage	25A
	10 A gG for signalling circuit pursuant to IEC 60947-5-1
<b>Associated fuse</b>	40 A gG at <= 690 V type 1 coordination for power supply circuit
	25 A gG at <= 690 V type 2 coordination for power supply circuit
<b>Rated insulation voltage (U<sub>i</sub>)</b>	Power supply circuit, status 1 600 V CSA certified
	Power supply circuit, status 1 600 V UL certified
	Signalling circuit, status 1 690 V pursuant to IEC 60947-1
	Signalling circuit, status 1 600 V CSA certified
	Signalling circuit, status 1 600 V UL certified
<b>Average impedance</b>	Power supply circuit, status 1 690 V according to IEC 60947-4-1
<b>Average impedance</b>	2.5 mOhm - lth 25 A 50 Hz for power circuit
<b>Power dissipation per pole</b>	1,56 W AC-1
<b>Switching duration, network-group (ms)</b>	26
<b>Switching duration, group-network (ms)</b>	26
<b>Maintenance consumption in VA</b>	70 VA 50 Hz 0,75 20 °C)
	70 VA 60 Hz 0,75 20 °C)
<b>Consumption on call in VA</b>	7 VA 50 Hz 0,3 20 °C)
	7,5 VA 60 Hz 0,3 20 °C)
<b>Heat dissipation</b>	2...3 W at 50/60 Hz
<b>Maximum cable cross-sections (mm<sup>2</sup>)</b>	25 mm <sup>2</sup> / 2x10 mm <sup>2</sup>

## 3. Mechanical specifications

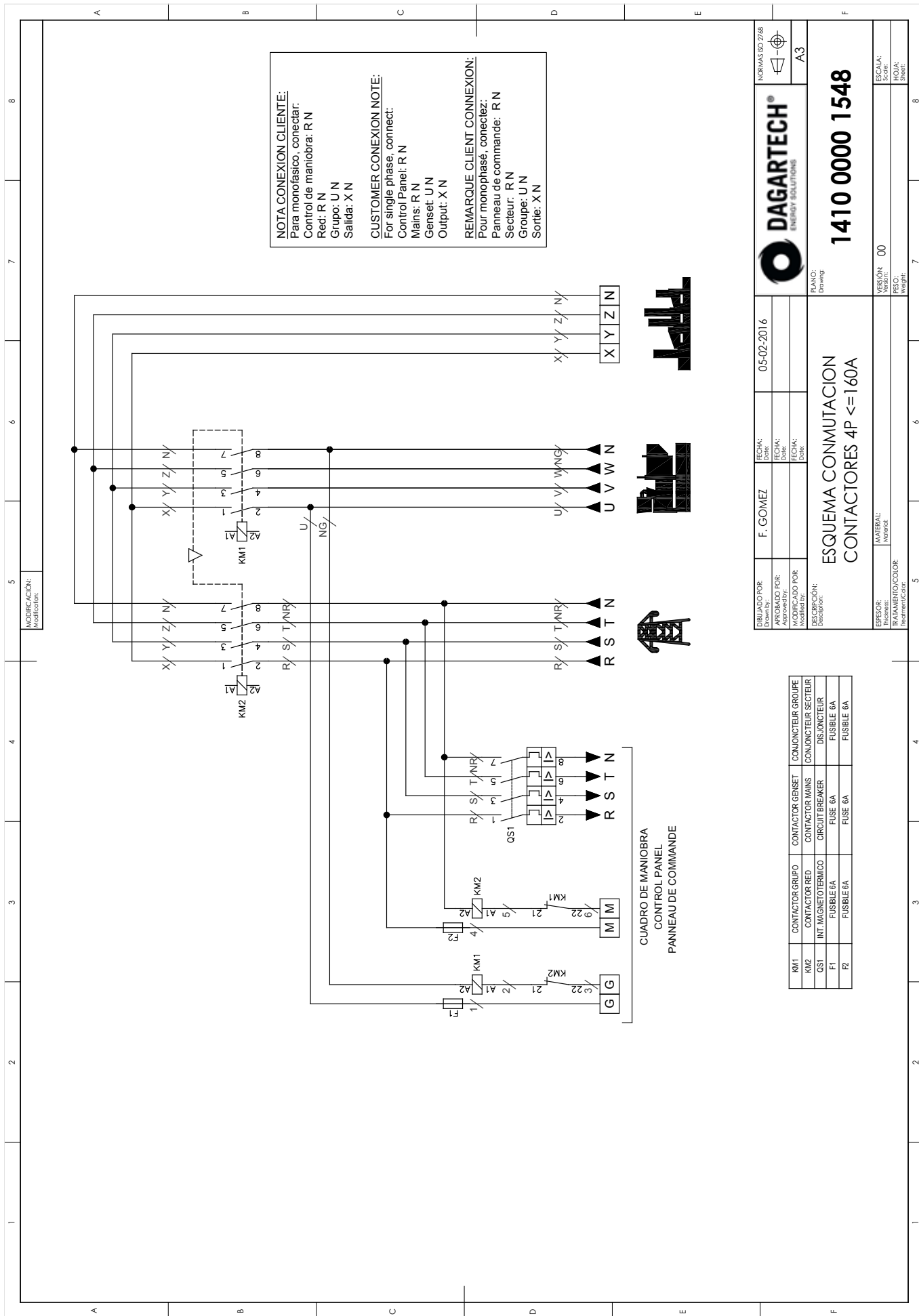
Electrical specifications / Amperage	25A
<b>Mechanical durability (cycles)</b>	15
<b>Mechanical protection index</b>	IP66
<b>Mechanical shock resistance of the enclosure according to IEC 62262</b>	IK10
<b>RAL Colour</b>	RAL 7035

Electrical specifications / Amperage	25A
<b>Mechanical durability (cycles)</b>	15
<b>Mechanical shock resistance of the enclosure according to IEC 62262</b>	IK10



MODIFICACIÓN: Modification:							
DIBUJADO POR: Drawn by:	PLECINA	FECHA: Date:	24/11/2021			NORMAS ISO 2768-c	
APROBADO POR: Approved by:		FECHA: Date:					
MODIFICADO POR: Modified by:		FECHA: Date:					
DESCRIPCIÓN: Description:				PLANO: Drawing:			
<b>ARMARIO DE CHAPA 300X400X200 - NSYCRN34200 (ALTO X ANCHO X PROFUNDO)</b>				<b>140000005338</b>			
ESPEJOR: Thickness:	MATERIAL: VER LISTADO		VERSIÓN: Version:		ESCALA: 1:7.5		
TRATAMIENTO/COLOR: Treatment/Color:			PESO: Weight: 5.94		HOJA: 1 / 1		

V.O. -2024. Last update: 19/04/2024. Indicative technical plan and indicative images. Dagartech reserves the right to modify the data in this technical sheet without prior notice.



DIBUJADO POR: F. GOMEZ  
 APROBADO POR:  
 MODIFICADO POR:  
 DESCRIPCION:

FECHA: 05-02-2016  
 FECHA:  
 FECHA:

NORMAS ISO 2768  
 A3

**DAGARTECH®**  
 ENERGY SOLUTIONS

**1410 0000 1548**

PLANO:  
 Drawing:

ESQUEMA:  
 Scheme: 00  
 PESO:  
 Weight:

REF	DESCRIPCION	QUANTIDAD	UNIDAD
KM1	CONTACTOR GRUPO	1	CONJUNTO
KM2	CONTACTOR RED	1	CONJUNTO
QS1	INT. MAGNETOTERMICO	1	DISJUNCTOR
F1	FUSIBLE 6A	2	FUSIBLE 6A
F2	FUSIBLE 6A	2	FUSIBLE 6A



**DAGARTECH<sup>®</sup>**

CUSTOM ENERGY SOLUTIONS

---

[info@dagartech.com](mailto:info@dagartech.com)

T +34 976 141 655

---

**CUSTOM  
ENERGY  
SOLUTIONS**

[dagartech.com](http://dagartech.com)